

Coláiste Pobail na Mainistreach
Bóthar na Mainistreach An Port Mór Portláirge X91 PC91
Príomhoide: Michelle Ní Sheafraidh
Leas-Phríomhoide: Colm de Ris
Leas-Phríomhoide: Helen Ní Chonchubhair
Leas-Phríomhoide: Laura Ní Ghiolla Phódraig

Abbey Community College
Abbey Road Ferrybank Waterford X91 PC91
Principal: Michelle Jefford
Deputy Principal: Colm Rice
Deputy Principal: Helen O'Connor
Deputy Principal: Laura Fitzpatrick



T 051-832930

F 051-851110

info@abbeycommunitycollege.com

www.abbeycommunitycollege.com

2nd March, 2020

Dear Parents/Guardians,

As a case of Covid-19 has been confirmed in Ireland, I would like to take the opportunity to remind you of the advice that the Department of Education and Skills has given us. The most up-to-date information is posted under *Correspondence* on our website.

Also the Chief Medical Officer from the Department of Health, Dr Tony Holohan, has issued the letter below (see page 4) to parents of school children travelling from affected regions.

As the Department of Health's Poster notes (see pages 2 and 3) the most important action we can take to protect ourselves from Covid-19 is **regular hand-washing and good respiratory hygiene**.

- Wash your hands well and often to avoid contamination
- Cover your mouth and nose with a tissue or sleeve when coughing or sneezing
- Use a bin to discard tissues
- Avoid touching the eyes, nose or mouth with unwashed hands
- Clean and disinfect frequently touched objects and surface

Other relevant information on the HSE website tells us that at the moment the risk of catching coronavirus in Ireland is still low. While this may change most people may continue to go to work, school and other public places, as usual.

Anyone who knows they have been in close contact with a confirmed case in the last 14 days and has symptoms i.e. cough, shortness of breath, fever should:

- Isolate themselves from other people - this means going into a different, well-ventilated room, with a phone
- Phone a GP, or Emergency Department - if this is not possible, phone 112, or 999
- In a medical emergency (i.e. if you have severe symptoms) phone 112 or 999

Close contact means either:

- Face-to-face contact
- Spending more than 15 minutes within 2 metres of an infected person
- Living in the same house as an infected person

Here in Abbey Community College, Ferrybank, we will be following all guidelines issued by the both the Department of Health and the Department of Education and Skills.

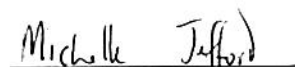
We would also like to ask for the assistance of parents/guardians as follows:

- Please do not send a student who is sick to school, especially if suffering from cough, shortness of breath, fever
- Remind students to follow standard procedures noted above

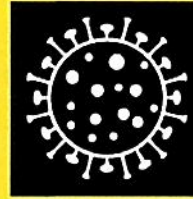
If your child wishes to carry hand sanitiser in school, they are welcome to do so.

Thank you in advance to parents/guardians and all of our students for your support in this matter.

Yours sincerely,


Michelle Jefford,
Principal

Coronavirus COVID-19



Coronavirus
COVID-19
Public Health
Advice

Advice For Schools

Who is at Risk?

- Anyone who has been to an affected region in the last 14 days **AND** is experiencing symptoms
- Anyone who has been in close contact with a confirmed or probable case of COVID-19 (Coronavirus) in the last 14 days **AND** is experiencing symptoms

How to Prevent



Wash

your hands well and often to avoid contamination



Cover

your mouth and nose with a tissue or sleeve when coughing or sneezing and discard used tissue



Avoid

touching eyes, nose, or mouth with unwashed hands



Clean

and disinfect frequently touched objects and surfaces

The Symptoms

> A Cough > Shortness of Breath > Breathing Difficulties > Fever (High Temperature)

Affected Regions

Check the list of affected regions on www.hse.ie

What to do if you are at risk

I've been to an affected region in the last 14 days and

I HAVE symptoms

1. Stay away from other people
2. Phone your GP without delay
3. If you do not have a GP
Phone 112 or 999

I DO NOT HAVE symptoms

For advice visit www.hse.ie

I've been in close contact with a confirmed or probable case of COVID-19 (Coronavirus) in the last 14 days and

I HAVE symptoms

1. Stay away from other people
2. Phone your GP without delay
3. If you do not have a GP
Phone 112 or 999

I DO NOT HAVE symptoms

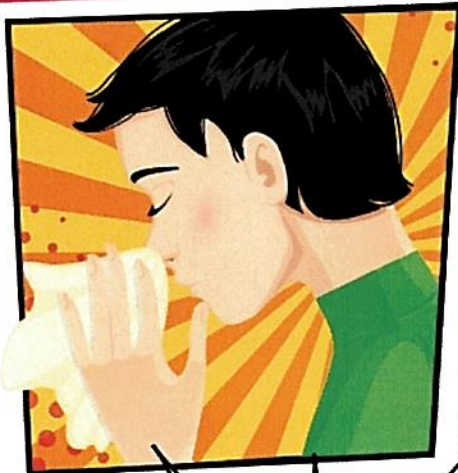
For advice visit www.hse.ie

For Daily Updates Visit

www.gov.ie/health-covid-19
www.hse.ie

COVER YOUR COUGH AND SNEEZE

STOP THE SPREAD OF GERMS THAT MAKE PEOPLE SICK



When you cough or sneeze **cover your nose and mouth** with a tissue

OR Cough or sneeze into your elbow, not your hands.

Throw away your tissue!



Clean your hands after coughing or sneezing.

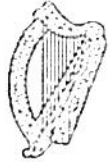
THANKS!



Building a Better Health Service

Seirbhís Sláinte Níos Fearr a Forbairt





1 March 2020

Dear Principal,

You may be aware that the first case of Covid-19 (Coronavirus) in Ireland was confirmed on Saturday, 29 February 2020.

As part of the public follow-up investigation and public health management of this case, and in order to prevent the possible spread of infection, a school in the east of the country has been closed from Sunday, 1 March until Monday, 16 March 2020.

The closing of this school was a decision made on public health grounds after risk assessment deemed it appropriate. All other schools will remain open.

I want to take this opportunity again to remind you that advice and guidance on Covid-19 is available at www.hse.ie.

I would also like to thank you for your continued support and assistance in communicating to parents and pupils as this situation continues to evolve, both nationally and internationally.

Both the Department of Health and the Department of Education and Skills will continue to communicate with all schools on this issue.

Yours,

Dr Tony Holohan
Chief Medical Officer
Department of Health